

III. EXPLOATAREA CINEMATOGRAFICĂ **EXHIBITION**

1. **DATE GENERALE 2012 - 2016**
GENERAL OVERVIEW BETWEEN 2012 - 2016
2. **STATISTICĂ GENERALĂ PRIVIND REȚEAUA CINEMATOGRAFICĂ**
GENERAL STATISTICS REGARDING THE EXHIBITION
3. **REALIZARILE ANULUI 2016 DUPĂ ȚARA DE ORIGINE/**
ADMISSION ACCORDING TO THE ORIGIN RELEASE FEATURE FILMS 2016
 - 3.1. **NUMAR SPECTATORI REALIZAT CU FILMELE ÎN PREMIERA PE ȚARI 2012 - 2016**
ADMISSIONS ACCORDING TO THE ORIGIN OF FIRST-TIME RELEASE FILMS.
 - 3.2. **TOTAL SPECTATORI DUPĂ ȚARA DE ORIGINE 2012 - 2016**
ADMISSIONS ACCORDING TO THE ORIGIN OF RELEASED FEATURE FILMS
4. **NUMARUL SPECTATORILOR REALIZAT CU FILMELE ÎN PREMIERA, PE DISTRIBUITORI**
ADMISSIONS ACCORDING TO MAJOR DISTRIBUTION COMPANIES OF FIRST-TIME RELEASED FILMS
5. **NUMĂRUL SPECTATORILOR REALIZAT CU TOATE FILMELE DIFUZATE PE DISTRIBUITORI/ADMISSIONS ACCORDING TO MAJOR DISTRIBUTION COMPANIES 2012 - 2016**
6. **PRIMELE 20 DE CINEMATOGRAFE CU UN ECRAN DUPĂ NUMARUL SPECTATORILOR 2016 / THE TOP 20 CINEMAS BY ADMISSIONS**
7. **CINEMATOGRAFE MULTIECRAN SI MULTIPLEXURI ÎN FUNCȚIUNE 2016**
MULTISCREENS CINEMAS AND MULTIPLEXES
8. **PRINCIPALELE CINEMATOGRAFE DE ARTĂ 2016**
THE MAIN ART CINEMAS
9. **PRIMELE 20 DE FILME DUPĂ NUMARUL SPECTATORILOR - 2016**
THE TOP 20 FEATURE FILMS BY ADMISSIONS - 2016
10. **PRIMELE 20 FILME EUROPENE DUPĂ NUMARUL SPECTATORILOR - 2016**
THE TOP 20 EUROPEAN FEATURE FILMS BY ADMISSIONS - 2016
11. **TOP FILME DE PREMIERA ROMÂNESTI DUPĂ NUMARUL DE SPECTATORI Anul 2016**
THE TOP 10 OF FIRST-RELEASE NATIONAL FEATURE FILMS BY ADMISSIONS
12. **PRIMELE 20 FILME ROMÂNESTI DUPĂ NUMARUL SPECTATORILOR 2012-2016**
THE TOP 20 OF FIRST-RELEASE NATIONAL FEATURE FILMS BY ADMISSIONS

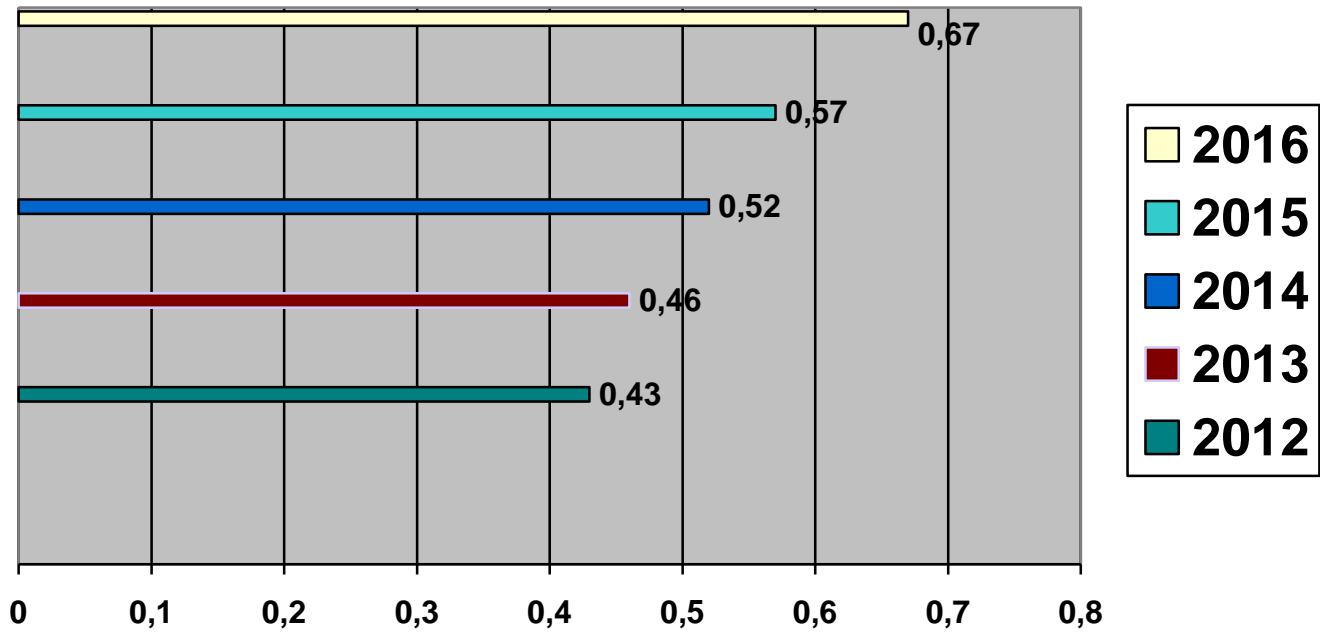
III. EXPLOATAREA DE FILME

1. DATE GENERALE

GENERAL OVERVIEW BETWEEN 2012 - 2016

Nr. Crt.	Date generale/General data	2012	2013	2014	2015	2016
1.	Cinematografe în funcțiune/ Number of active cinemas	81	76	78	82	92
2.	Locuri /Seats	58 096	57 248	61 534	68 415	74 116
3.	Spectatori /Admissions	8 348 538	9 048 257	10 171.644	11 166 861	13 033 687
4.	Încasări totale (RON)/ Gross box office (RON)	144 793 811	160 523 144	185 201.343	206 868 801	241 582 416
5.	Frecvența pe locuitor/ Average admissions per inhabitant	0,43	0,46	0,52	0,57	0,67
6.	Preț mediu bilet - lei/ Average ticket price - national curency	17,34	17,74	18,21	18,52	18,54

SPECTATORI FILM - FRECVENȚA PE LOCUITOR /
AVERAGE ADMISSIONS PER INHABITANT
2012 _ 2016

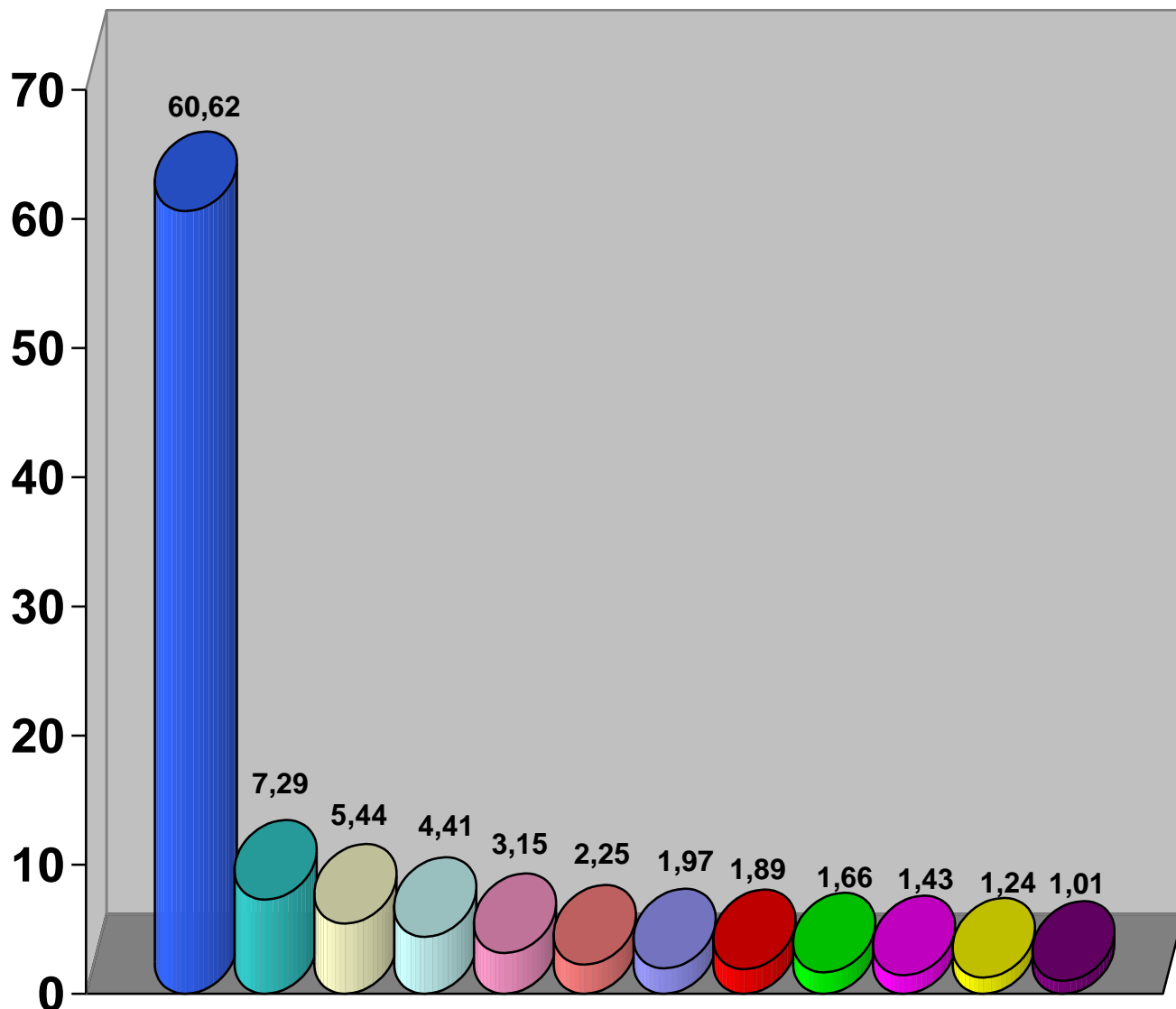


PRINCIPALELE SOCIETĂȚI DE EXPLOATARE A CINEMATOGRAFELOR
MAJOR EXHIBITION COMPANIES
ANUL / YEAR 2016

Principalele societati de exploatare a cinematografelor/ Major exhibition companies	Cinematografe în funcțiune/Number of active cinemas	Ecrane/ Screens	Spectatori/ Admissions	Incasari (RON)/ Gross box office (RON)
CINEMA CITY ROMANIA	25	231	7 900 691	153 244 461
BANEASA DEVELOPMENTS	1	13	949 534	21 356 908
MOVIEPLEX CINEMA	1	11	708 714	13 449 998
ESB CINEMA SERVICE	1	8	574 984	10 494 612
HOLLYWOOD MULTIPLEX OPERATIONS	1	10	410 507	8 427 533
PRO SOLUTION SRL	3	11	293 268	4 903 772
CINE GRAND	2	12	257 013	4 671 313
CINEMA PALACE ORADEA	1	6	246 597	3 762 023
TV SAT 2002	3	3	216 226	2 951 698
R.A.D.E.F. ROMANIAFILM	15	15	186 151	1 952 129
INSPIRE THROUGH	2	5	161 444	2 321 672
WINI IMOBILI	1	7	132 191	2 033 870
CITYPLEX	5	13	121 268	1 673 571
MARCOM FANTASTIC	4	6	113 868	1 585 402
ORADEA SHOPING CITY	1	6	100 302	1 533 346
ROCINEMA	2	4	94 043	1 383 431
ASOCIATIA VICTORIA FILM	1	1	62 202	529 633
INSTITUTUL CULTURAL FRANCEZ	1	1	55 877	442 341
CENTRUL CULTURAL JUDEȚEAN CĂLĂRAȘI	1	1	40 800	444 240
BEST SALE	1	2	37 347	593 842
PRIMARIA ONEȘTI	1	1	33 826	384 765

PRIMARIA LUGOJ	1	2	33 583	319 457
METACOM SATU MARE	1	1	30 484	467 478
CENTRUL JUNETEAN PENTRU CULTURA BISTRITA	1	1	24 571	319 436
PRIMĂRIA VULCAN	1	1	24 043	306 767
COMPANIA DE EXPLOATARE FILM	1	1	23 637	370 190
VISION P.M	1	1	19 920	235 975
A N F	2	2	16 794	131 678
NOUL CINEMATOGRAF AL REGIZORULUI ROMAN	1	1	16 167	154 314
TEATRUL MUNICIPAL ARIEL	1	1	15 383	168 338
PRIMĂRIA SUCEAVA	1	1	12 407	109 290
PRIMĂRIA DORHOI	1	1	10 155	151 237
CASA DE CULTURĂ ODOBEȘTI	1	1	8 400	42 000
PRIMĂRIA ALEXANDRIA	1	1	5 824	73 510
CINEMA CLUB TWINS PLOIESTI	1	1	5 756	73 134
INTECH SOLUTIONS	1	7	4 863	76 298
D.M.C.SLOBOZIA	1	1	4 313	21 565
PRIMĂRIA GHERLA	1	1	3 269	36 685
CARAVANĂ	1	1	77 263	384 508
TOTAL	92	393	13 033 687	241 582 416

**COTA DE PIATĂ A PRINCIPALILOR EXPLOATANȚI ÎN FUNCȚIE DE SPECTATORI /
 MARKET SHARE ACCORDING TO MAJOR EXHIBITION COMPANIES - 2016**



**2. STATISTICĂ GENERALĂ PRIVIND REȚEAUA CINEMATOGRAFICĂ /
GENERAL STATISTICS REGARDING THE EXHIBITION
ANUL / YEAR 2016**

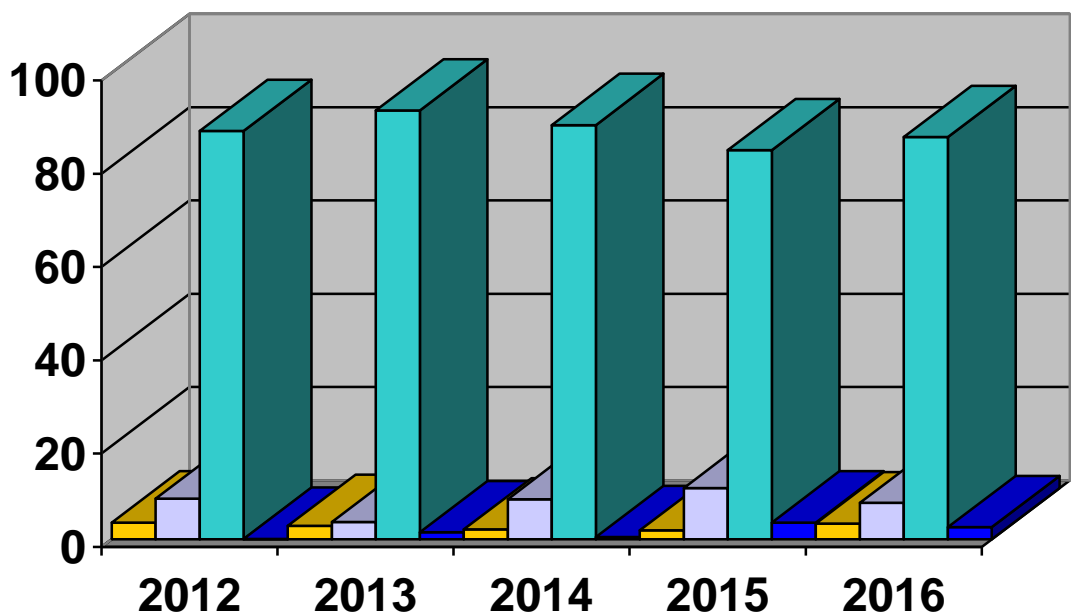
Număr cinematografe în funcțiune/ <i>Number of active cinemas</i>	92
Număr ecrane/ <i>Number of screens</i>	393
Număr locuri/ <i>Number of seats</i>	74 116
Număr locuri per ecran/ <i>Number of seats per screen</i>	189
Număr cinematografe cu 2, 3 sau mai multe ecrane/ <i>Number of multiscreens and multiplexes</i>	48
Număr cinematografe de artă / Europa Cinemas <i>Number of art cinemas /Europa Cinemas</i>	8
Număr spectacole/ <i>Number of screenings</i>	577 525
Număr spectatori/ <i>Admissions</i>	13 033 687
Frecvența pe locuitor/ <i>Average admissions per inhabitant</i>	0,67
Spectatori / spectacol_ <i>Admissions / screening</i>	23
Încasări - RON/ <i>Gross box office - in RON</i>	241 582 416
Preț mediu bilet lei/ <i>Average ticket price (national curency)</i>	18,54

**3.REALIZĂRILE ANULUI 2016 DUPA ȚARA DE ORIGINE /
ADMISSION ACCORDING TO THE ORIGIN RELEASE FEATURE FILMS 2016**

TARA	TOTAL FILME			FILME IN PREMIERA		
	Nr.TITLURI	SPECTATORI	INCASARI	TITLURI	SPECTATORI	INCASARI
	No.TITLE	ADMISSION	BOX OFFICE	No.TITLE	ADMISSION	BOX OFFICE
TOTAL FILME	505	13.033.687	241.582.416	228	12.631.302	234.597.467
RO	64	459.053	6.725.737	25	428.048	6.506.609
US	220	11.163.351	210.292.625	116	10.890.575	204.731.067
EU	169	1.065.694	18.570.144	69	987.398	17.585.282
GB	15	413.107	8.201.444	8	412.521	8.197.230
FR	60	337.498	5.669.916	21	297.297	5.075.323
DE	15	37.945	523.600	3	34.178	498.147
IT	5	15.767	260.131	4	15.593	258.754
ES	13	44.818	714.950	7	43.701	706.073
ALTE TARI (EU)	61	216.559	3.200.103	26	184.108	2.849.755
ALTE TARI	52	345.589	5.993.910	18	325.281	5.774.509

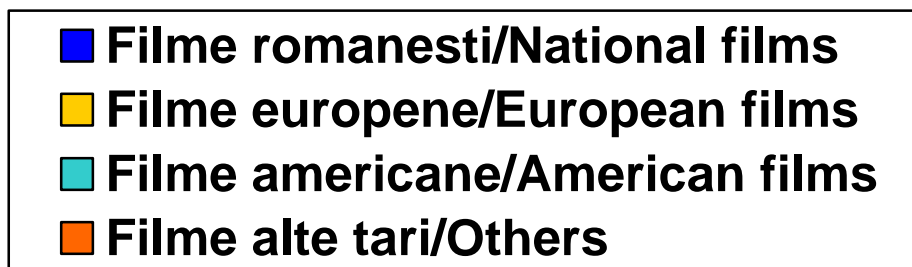
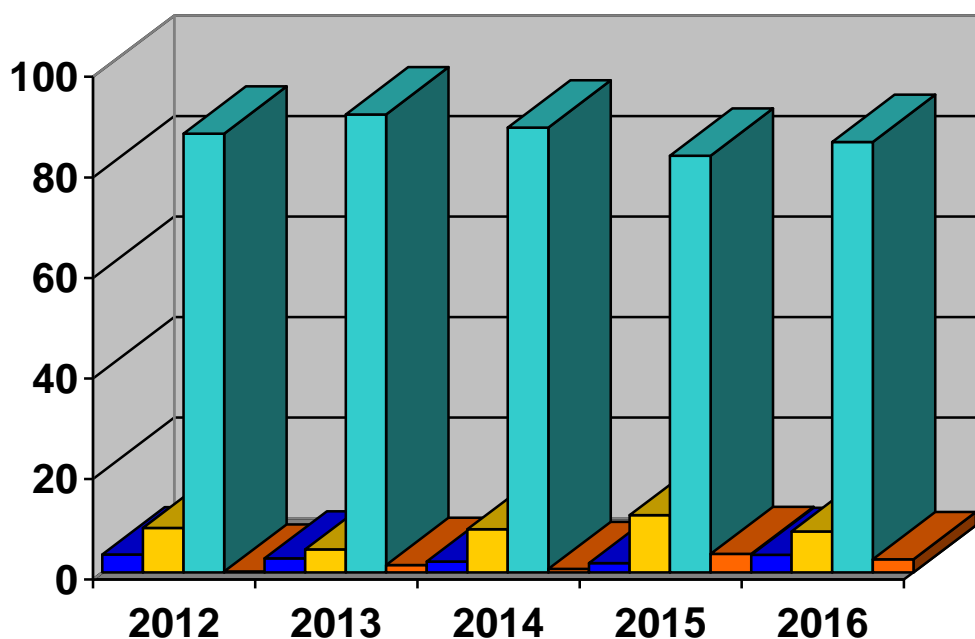
3.1 NUMĂR DE SPECTATORI REALIZAT CU FILMELE ÎN PREMIERĂ PE ȚĂRI
ADMISSIONS ACCORDING TO THE ORIGIN OF FIRST TIME RELEASE FEATURE FILMS
2012 - 2016

Țara de origine/ Film origin	2012 %	2013 %	2014 %	2015 %	2016 %
Românești/ National films	288 363 3,67	242 030 2,86	199 549 2,11	203 822 1,90	428 048 3,39
Europene/ European films	688 440 8,77	314 018 3,71	814 518 8,61	1 184 312 11,04	987 398 7,82
Americane/ American films	6 871 058 87,53	7 776 969 91,94	8 393 689 88,77	8 947 476 83,46	10 890 575 86,22
Alte țări/ Others	2 401 0,03	125 791 1,49	47 692 0,50	384 708 3,58	325 281 2,58
Total	7 850 262	8 458 808	9 455 448	10 720 318	12 631 302



**3.2 TOTAL SPECTATORI DUPĂ ȚARA DE ORIGINE /
ADMISSIONS ACCORDING TO THE ORIGIN OF ALL RELEASED FEATURE FILMS
2012 - 2016**

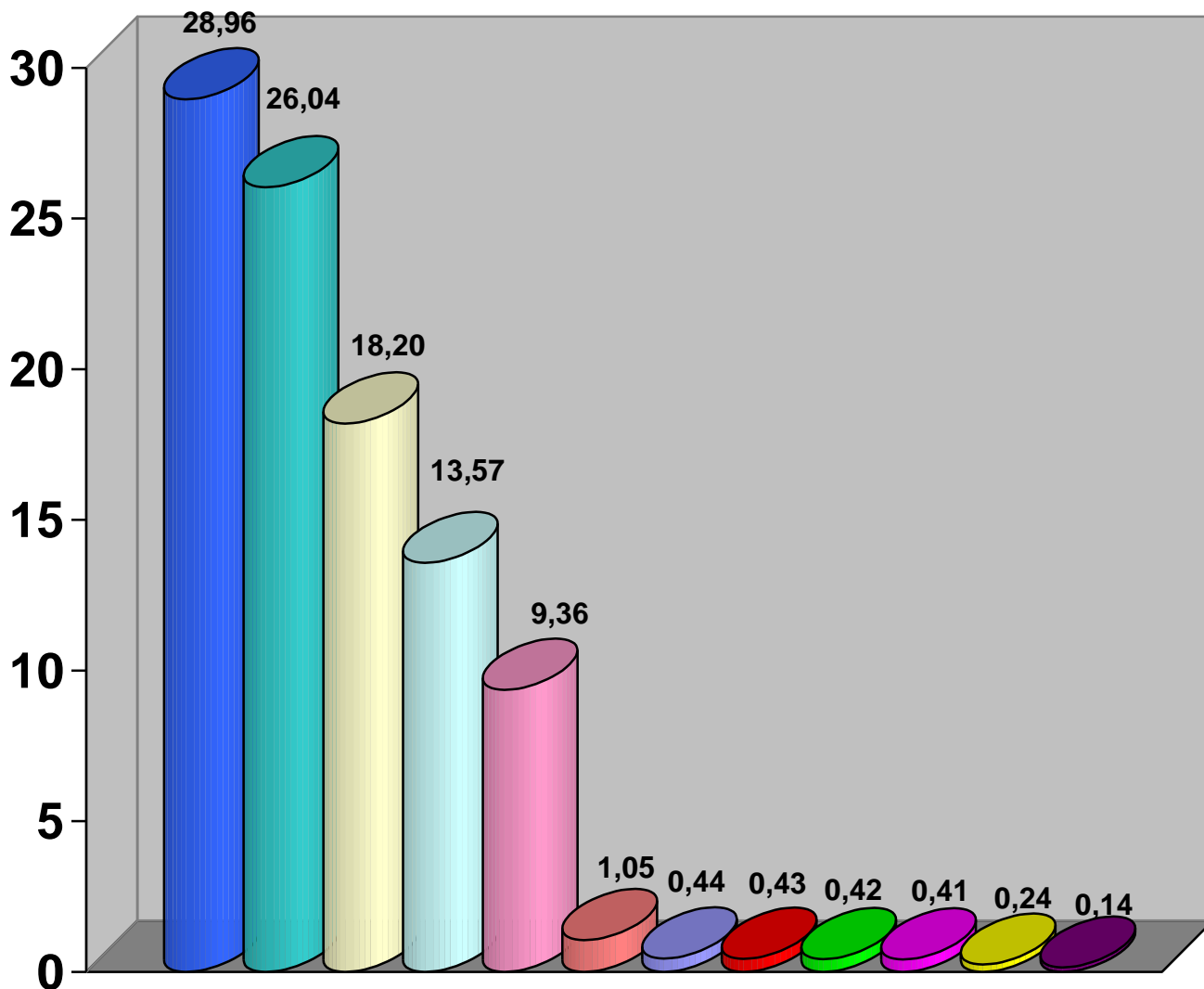
Țara de origine/ <i>Film origin</i>	2012 %	2013 %	2014 %	2015 %	2016 %
Românești/ <i>National films</i>	297 487 3,56	256 594 2,84	221 625 2,18	216 316 1,94	459 053 3,52
Europene/ <i>European films</i>	747 095 8,95	418 018 4,62	876 961 8,62	1 275 601 11,42	1 065 694 8,17
Americane/ <i>American films</i>	7 290 028 87,32	8 238 764 91,05	8 996 933 88,45	9 259 088 82,92	11 163 351 85,65
Alte țări/ <i>Others</i>	13 928 0,17	134 881 1,49	76 125 0,75	415 856 3,72	345 589 2,65
Total	8 348 538	9 048 257	10 171 644	11 166 861	13 033 687



**4. NUMĂRUL SPECTATORILOR REALIZAT CU FILMELE ÎN PREMIERĂ PE DISTRIBUITORI
ADMISSIONS ACCORDING TO MAJOR DISTRIBUTION COMPANIES OF FIRST-TIME
RELEASED FILMS 2012 - 2016**

<i>Distribuitori/ Distribution companies</i>	2012 %	2013 %	2014 %	2015 %	2016 %
Freeman Entertainment			792.309 8,38	2.262.850 21,11	3.657.835 28,96
Ro - Image 2000	1.872.467 23,85	1.671.038 19,76	1.699.574 17,97	3.599.093 33,57	3.289.131 26,04
Forum Film Romania	1.497.643 19,81	1.496.546 17,69	1.696.828 17,95	2.361.856 22,03	2.298.327 18,20
Odeon Cineplex	919.425 11,71	1.027.971 12,15	1.517.757 16,05	912.111 8,51	1.714.575 13,57
Intercom Film	1.015.571 12,94	1.056.453 12,49	1.107.349 11,71	1.275.473 11,90	1.181.773 9,36
Zazu Film			87.288 0,92	23.753 0,22	133.207 1,05
Cine Europa				9.975 0,09	55.712 0,44
Voodoo Films					54.444 0,43
Transilvania Film	98.461 1,25	15.640 0,18	28.243 0,30	86.340 0,81	53.539 0,42
Independența Film	42.885 0,55	46.475 0,55	80.543 0,85	39.055 0,36	51.489 0,41
Mandragora					30.217 0,24
Movie Production Entertainment					17.224 0,14
Micro Film					16.256 0,13
Clorofilm	5.438 0,07	5.420 0,06	4.351 0,05	16.506 0,15	14.814 0,12
Alți distribuitori/ Others	105.915 1,35	64.664 0,76	89.607 0,95	46.185 0,43	62.759 0,50
Total	7.850.262	8.458.808	9.455.448	10.720.318	12.631.302

COTA DE PIATA A PRINCIPALILOR DISTRIBUTORI CU FILME IN PREMIERĂ, ÎN
 FUNCȚIE DE SPECTATORI /
 MARKET SHARE ACCORDING TO DISTRIBUTION COMPANIES OF FIRST-TIME RELEASE
 FILMS
 ANUL/YEAR 2016

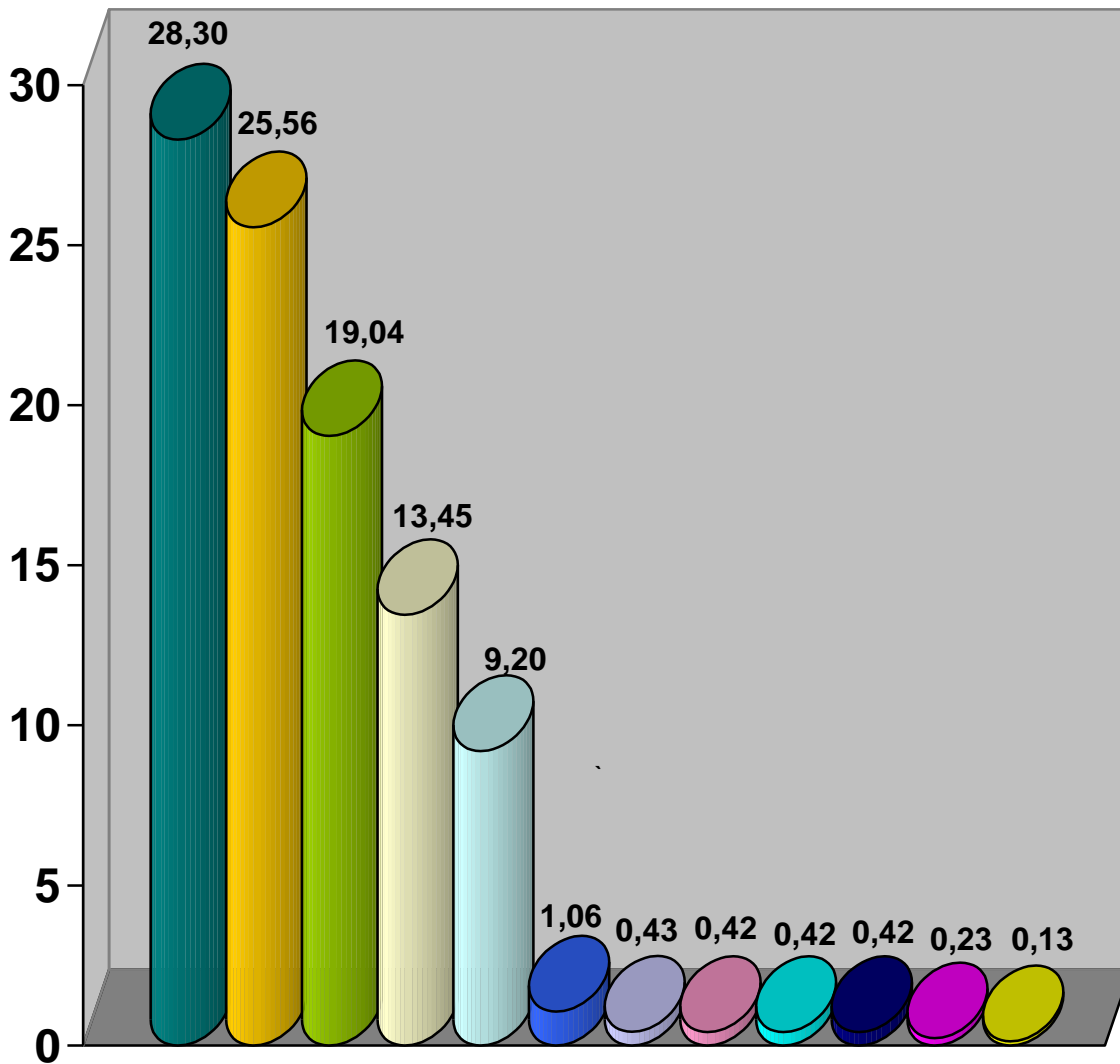


■ Freeman Entertainment	■ Ro-Image 2000
■ Forum Film Romania	■ Odeon Cineplex
■ Intercom Film	■ Zazu Film
■ CineEuropa	■ Voodoo Films
■ Transilvania Film	■ Independenta Film
■ Mandragora	■ Movie Production

5. NUMĂRUL SPECTATORILOR REALIZAT CU TOATE FILMELE DIFUZATE
PE DISTRIBUITORI
ADMISSIONS ACCORDING TO MAJOR DISTRIBUTION COMPANIES
2012 - 2016

Distribuitori/ Distribution companies	2012 %	2013 %	2014 %	2015 %	2016 %
Freeaman Entertainment			792.309 7,79	2.326.223 20,83	3.689.009 28,30
Ro -Image 2000	2.015.357 24,14	1.855.701 20,51	1.820.820 17,90	3.625.599 32,47	3.331.886 25,56
Forum Film Romania	1.499.202 17,96	1.647.234 18,20	1.997.512 19,64	2.516.994 22,54	2.481.755 19,04
Odeon Cineplex	954.539 11,43	1.152.730 12,74	1.562.658 15,36	993.185 8,89	1.752.916 13,45
Intercom Film	1.103.270 13,22	1.070.654 11,83	1.119.925 11,01	1.328.450 11,90	1.199.535 9,20
Zazu Film			87.288 0,86	24.118 0,22	137.790 1,06
Cine Europa					56.646 0,43
VoodooFilms	52.273 0,63	6.584 0,07	5.449 0,05	4.178 0,04	55.055 0,42
Transilvania Film	102.451 1,23	19.827 0,22	30.567 0,30	87.476 0,78	54.488 0,42
Independenta Film	48.268 0,58	51.172 0,57	86.458 0,85	42.014 0,38	54.363 0,42
Mandragora					30.350 0,23
Clorofilm	28.518 0,34	19.626 0,22	22.575 0,22	19.496 0,17	17.524 0,13
Movie Production Entertainment					17.224 0,13
Micro Film					16.256 0,12
Institutul Francez					11.747 0,09
Domestic Film					10.852 0,08
Tiff	7.223 0,09	6.556 0,07	9.317 0,09	14.625 0,13	9.730 0,07
Asociatia Culturala Macondo		16.399 0,18		11.388 0,10	9.602 0,07
Alti distribuitori/ Others	93.032 1,11	83.313 0,94	118.132 1,16	85.105 0,76	96.959 0,74
TOTAL	8.348.538	9.048.257	10.171.644	11.166.861	13.033.687

COTA DE PIAȚĂ A PRINCIPALILOR DISTRIBUITORI/
 MARKET SHARE OF MAJOR DISTRIBUTION COMPANIES
 ANUL/ YEAR 2016



Freeman Entertainment	Ro-Image 2000
Forum Film Romania	Odeon Cineplex
Intercom Film	Zazu Film
Cine Europa	Voodoo Films
Transilvania Film	Independenta Film
Mandragora	Clorofilm

6. PRIMELE 20 DE CINEMATOGRAFE CU UN ECRAN, DUPĂ NUMĂRUL SPECTATORILOR/
 THE TOP 20 CINEMAS BY ADMISSIONS
 ANUL / YEAR 2016

Nr. Crt.	Cinematograf/ Cinema	Localitatea/ Town	Număr Locuri/ Number of seats	Număr Spectatori/ Admissions
1	ION MANOLE	GALAȚI	520	114 113
2	ARTA	SIBIU	230	82 568
3	FLORIN PIERSIC	CLUJ NAPOCA	720	69 755
4	VICTORIA	CLUJ NAPOCA	283	62 202
5	ELVIRA POPESCU	BUCUREȘTI	239	55 877
6	DACIA	RESIȚA	402	54 435
7	DACIA	PIATRA NEAMȚ	629	43 783
8	AUREL ELEFTERESCU	CALARASI	159	40 800
9	PATRIA	CRAIOVA	708	37 314
10	CAPITOL	ONESTI	296	33 826
11	BELA LUGOSI	LUGOJ	138	33 583
12	ARTA	TARGU MURES	251	33 506
13	METACOM-SATU MARE	SATU MARE	70	30 484
14	DACIA	BISTRIȚA	154	24 571
15	LUCEAFARUL	VULCAN	234	24 043
16	CINEMA PRO	BUCUREȘTI	593	23 637
17	COTROCENI	BUCUREȘTI	94	19 920
18	DACIA	BUZAU	312	19 545
19	LUNA	CANANSEBEȘ	204	17 955
20	MUZEUL ȚĂRANULUI ROMÂN	BUCUREȘTI	337	16 167

**7. CINEMATOGRAFE MULTIECRAN ȘI MULTIPLEXURI ÎN FUNCȚIUNE/
MULTISCREENS AND MULTIPLEXES 2016**

<i>Cinematograf/ Cinema</i>	<i>Localitate/ Town</i>	<i>Ecrane/ Screens</i>	<i>Locuri/ Seats</i>	<i>Spectatori/ Admissions</i>
CITYPLEX TULCEA	Tulcea	2	212	21 406
CITYPLEX BÂRLAD	Bârlad	2	237	31 195
CITYPLEX VASLUI	Vaslui	2	150	11 888
COLOURS CINEMA	Craiova	2	187	86 632
CINEMA SLATINA	Slatina	2	86	37 347
HAPPY CINEMA FOCȘANI	Focșani	2	222	82 799
LINE CINEMA RM.VÂLCEA	Rm.Vâlcea	2	193	66 810
LINE CINEMA TÂRGOVIȘTE	Târgoviște	2	232	27 233
CITYPLEX BRAȘOV	Brașov	3	243	4 784
HAPPY CINEMA BUZĂU	Buzău	3	391	78 648
COLOURS CINEMA	Alba Iulia	3	309	104 948
CITYPLEX TOMIS CONSTANȚA	Constanța	4	679	51 995
CINEMA CITY IAȘI	Iași	5	865	474 120
CINE GRAND UVERTURA MALL	Botoșani	5	446	98 917
CINEMA CITY PLOIEȘTI AFI	Ploiești	6	1 270	87 742
CINEMA CITY TÂRGU JIU	Târgu Jiu	6	1 037	110 482
CINEMA CITY DEVA	Deva	6	1 087	196 413
CINEMA CITY DROBETA TURNU SEVERIN	Drobeta Turnu Severin	6	939	99 217

CINEMA CITY PITEȘTI	Pitești	6	1 264	191 743
CINEMA CITY BAIA MARE	Baia Mare	6	1 151	204 628
CORTINA DIGIPLEX	Oradea	6	961	100 302
CINEMA PALACE ORADEA	Oradea	6	685	246 597
CINEMA CITY PIATRA NEAȚ	Piatra Neamț	6	992	23 380
INSPIRE CINEMA CRAIOVA	Craiova	6	565	101 688
CINEMA CITY TIMIȘOARA	Timișoara	7	951	394 623
CINEMA TRIVALE PITEȘTI	Pitești	7	767	132 191
CINE GRAND IRIS TITAN	București	7	950	158 096
HAPPY CINEMA BUCUREȘTI	București	7	1 145	4 863
CINEMA CITY CLUJ NAPOCA POLUS	Cluj Napoca	8	1 792	340 558
CINEMA ONE BRAȘOV	Brașov	8	1470	574 984
CINEMA CITY BACĂU	Bacău	8	1 324	310 581
CINEMA CITY ARAD GTC	Arad	8	1 673	24 814
CINEMA CITY TÂRGU MUREȘ	Târgu Mureș	8	1 465	228 132
CINEMA CITY CONSTANȚA	Constanța	8	1 774	366 338
CINEMA CITY SUCEAVA	Suceava	8	1 346	314 841
CINEMA CITY CONSTANȚA PARK	Constanța	10	1 692	383 849
HOLLYWOOD MULTIPLEX	București	10	2 125	410 507
CINEMA CITY BRĂILA	Brăila	10	1 724	341 264

CINEMA CITY ARAD	Arad	10	1 628	252 135
CINEMA CITY CLUJ NAPOCA	Cluj	10	1 670	442 572
MOVIEPLEX CINEMA	București	11	2 564	708 714
CINEMA CITY PLOIEȘTI	Ploiești	12	2 088	387 542
GRAND CINEMA DIGIplex	București	13	2 654	949 534
CINEMA CITY TIMIȘOARA NEPI	Timișoara	13	2 531	324 679
CINEMA CITY MEGA MALL	București	14	2 366	659 140
CINEMA CITY PARK LAKE	București	14	1966	133 961
CINEMA CITY SUN PLAZA	București	15	2 835	526 505
CINEMA CITY COTROCENI	București	21	4 319	1 081 432

CINEMA CITY COTROCENI

Sali cinematograf/ Screens	Numar locuri/ Number of seats	Numar spectatori/ Admissions
1	31	15 935
2	27	11 118
3	30	12 554
4	166	37 999
5	199	42 456
6	283	68 638
7	217	48 095
8	329	80 508
9	297	95 304
10	365	112 258
11	283	77 685
12	252	52 280
13	256	58 443
14	92	24 274
15	171	37 514
16	175	34 504
17	197	30 508
18	188	36 322
19	178	28 361
20	185	27 854
21-IMAX	398	148 822
Total	4 319	1 081 432

CINEMA CITY SUN PLAZA

Sali cinematograf/ Screens	Numar locuri/ Number of seats	Numar spectatori/ Admissions
1	157	27 115
2	262	64 892
3	229	47 371
4	312	46794
5	131	24 455
6	105	25 183
7	88	17 698
8	81	15 766
9	105	18 028
10	138	23 109
11	138	27 460
12	228	39 870
13	242	36 322
14	216	32 587
15	403	79 855
Total	2 835	526 505

CINEMA CITY MEGA MALL

Sali cinematograf/ Screens	Numar locuri/ Number of seats	Numar spectatori/ Admissions
1	97	25 871
2	195	52 526
3	125	37 114
4	115	29 742
5	124	37 452
6	128	99 476
7	193	47 941
8	93	23 484
9	101	25 814
10	175	43 690
11	356	77 741
12	328	74 176
13	168	37 415
14	168	46 698
Total	2 366	659 140

CINEMA CITY PARK LAKE

Sali cinematograf/ Screens	Numar locuri/ Number of seats	Numar spectatori/ Admissions
1	118	7 642
2	125	11 414
3	119	9 664
4	132	9 541
5	113	8 783
6	105	7 522
7	195	15 213
8	189	13 645
9	237	16 222
10	316	18 632
11	171	9 889
12	60	2 146
13	50	1 873
14	37	1 775
Total	1 966	133 961

GRAND CINEMA DIGIPLEX BUCUREȘTI

Sali cinematograf/ Screens	Numar locuri/ Number of seats	Numar spectatori/ Admissions
1	363	124 583
2	303	113 287
3	105	54 144
4	105	56 588
5	177	79 796
6	480	126 416
7	480	113 567
8	43	15 414
9	43	14 939
10	155	71 074
11	207	81 569
12	97	50 055
13	97	48 102
Total	2 654	949 534

CINEMA CITY TIMIȘOARA NEPI

Sali cinematograf/ Screens	Numar locuri/ Number of seats	Numar spectatori/ Admissions
1	314	27 945
2	151	17 631
3	138	16 090
4	124	14 833
5	221	19 714
6	221	20 438
7	131	15 453
8- IMAX	409	52 862
9	135	16 701
10	143	13 839
11	103	10 442
12	144	71 118
13	297	27 613
Total	2 531	324 679

CINEMA CITY PLOIEȘTI

Sali cinematograf/ Screens	Numar locuri/ Number of seats	Numar spectatori/ Admissions
1	259	46 595
2	129	27 555
3	152	18 891
4	202	16 162
5	101	20 533
6	93	27 081
7	186	37 337
8	283	24 444
9	310	17 099
10	159	33 050
11	129	50 984
12	85	67 811
Total	2 088	387 542

MOVIEPLEX BUCUREȘTI

Sali cinematograf/ Screens	Numar locuri/ Number of seats	Numar spectatori/ Admissions
1	188	53 774
2	178	48 278
3	188	49 028
4	123	36 094
5	88	34 196
6	347	81 998
7	199	59 727
8	472	126 769
9	213	56 368
10	245	72 697
11	323	89 785
Total	2 564	708 714

HOLLYWOOD MULTIPLEX BUCUREȘTI MALL

Sali cinematograf/ Screens	Numar locuri/ Number of seats	Numar spectatori/ Admissions
1	270	51 047
2	131	25 751
3	396	60 411
4	131	22 325
5	270	49 265
6	155	38 856
7	155	32 974
8	307	63 065
9	155	31 477
10	155	35 336
Total	2 125	410 507

CINEMA CITY CONSTANȚA PARK

Sali cinematograf/ Screens	Numar locuri/ Number of seats	Numar spectatori/ Admissions
1	118	27 005
2	144	73 855
3	343	54 749
4	142	32 281
5	152	33 622
6	131	25 960
7	135	28 849
8	99	21 357
9	180	38 790
10	248	47 381
Total	1692	383 849

CINEMA CITY ARAD

Sali cinematograf/ Screens	Numar locuri/ Number of seats	Numar spectatori/ Admissions
1	262	36 414
2	162	26 018
3	108	15 952
4	78	13 013
5	281	48 195
6	125	19 464
7	125	19 565
8	124	22 343
9	115	14 874
10	248	36 297
Total	1 628	252 135

CINEMA CITY CLUJ-NAPOCA

Sali cinematograf/ Screens	Numar locuri/ Number of seats	Numar spectatori/ Admissions
1	174	35 499
2	174	35 557
3	174	34 351
4	174	36 318
5	66	22 266
6	207	56 753
7	217	67 389
8	218	79 835
9	200	47 368
10	66	27 236
Total	1 670	442 572

CINEMA CITY BRĂILA

Sali cinematograf/ Screens	Numar locuri/ Number of seats	Numar spectatori/ Admissions
1	256	44 962
2	256	44 774
3	344	70 436
4	278	42 642
5	115	27 025
6	106	25 798
7	77	17 555
8	106	25 263
9	93	22 264
10	93	20 545
Total	1 724	341 264

CINEMA CITY BACĂU

Sali cinematograf/ Screens	Numar locuri/ Number of seats	Numar spectatori/ Admissions
1	192	41 443
2	105	29 598
3	105	27 620
4	209	45 949
5	308	68 453
6	165	40 246
7	105	27 092
8	135	30 180
Total	1 324	310 581

CINEMA CITY TÂRGU MUREȘ

Sali cinematograf/ Screens	Numar locuri/ Number of seats	Numar spectatori/ Admissions
1	326	50 288
2	186	35 298
3	141	20 350
4	109	16 993
5	126	23 231
6	152	28 093
7	139	23 398
8	286	30 481
Total	1465	228 132

CINEMA CITY ARAD GTC

Sali cinematograf/ Screens	Numar locuri/ Number of seats	Numar spectatori/ Admissions
1	101	2 040
2	193	2 321
3	248	3 330
4	198	2 515
5	165	1 810
6	228	3 400
7	228	3 183
8	312	6 215
Total	1 673	24 814

CINEMA CITY CONSTANȚA

Sali cinematograf/ Screens	Numar locuri/ Number of seats	Numar spectatori/ Admissions
1	225	50 677
2	159	37 601
3	170	29 504
4	191	38 616
5	335	67 033
6	353	73 687
7	159	33 465
8	182	35 755
Total	1 774	366 338

CINEMA CITY CLUJ - NAPOCA POLUS

Sali cinematograf/ Screens	Numar locuri/ Number of seats	Numar spectatori/ Admissions
1	180	32 302
2	244	43 737
3	269	53 699
4	269	58 967
5	156	31 305
6	180	29 844
7	276	53 671
8	218	37 033
Total	1 792	340 558

CINEMA ONE BRAȘOV

Sali cinematograf/ Screens	Numar locuri/ Number of seats	Numar spectatori/ Admissions
1	333	116 894
2	200	76 419
3	92	37 589
4	167	71 593
5	167	70 680
6	228	87 918
7	157	60 036
8	126	53 855
Total	1470	574 984

CINEMA CITY SUCEAVA

Sali cinematograf/ Screens	Numar locuri/ Number of seats	Numar spectatori/ Admissions
1	288	67 756
2	225	51 563
3	132	33 258
4	106	30 820
5	79	23 223
6	114	26 728
7	191	35 604
8	211	45 889
Total	1 346	314 841

CINEMA CITY TIMIȘOARA

Sali cinematograf/ Screens	Numar locuri/ Number of seats	Numar spectatori/ Admissions
1	215	81 302
2	112	50 974
3	112	53 643
4	112	50 048
5	317	103 288
6	41	25 951
7	42	
Total	951	394 623

CINEMA TRIVALE PITEȘTI

Sali cinematograf/ Screens	Numar locuri/ Number of seats	Numar spectatori/ Admissions
1	144	21 718
2	176	27 795
3	84	20 182
4	95	15 100
5	140	23 379
6	40	9 416
7	88	14 601
Total	767	132 191

CINEMA HAPPY BUCUREȘTI

Sali cinematograf/ Screens	Numar locuri/ Number of seats	Numar spectatori/ Admissions
1	290	896
2	411	23
3	90	832
4	76	1 223
5	76	1 372
6	94	0
7	108	517
Total	1 145	4 863

CINE GRAND IRIS TITAN

Sali cinematograf/ Screens	Numar locuri/ Number of seats	Numar spectatori/ Admissions
1	178	33 190
2	186	36 100
3	186	26 060
4	78	9 493
5	78	13 194
6	122	27 839
7	122	12 219
Total	950	158 096

CINEMA CITY PITEȘTI

Sali cinematograf/ Screens	Numar locuri/ Number of seats	Numar spectatori/ Admissions
1	247	36 766
2	191	31 206
3	197	29 437
4	158	22 311
5	131	23 562
6	340	48 461
Total	1 264	191 743

CINEMA CITY BAIA MARE

Sali cinematograf/ Screens	Numar locuri/ Number of seats	Numar spectatori/ Admissions
1	259	38 159
2	158	28 703
3	210	33 437
4	139	28 052
5	77	24 218
6	308	52 059
Total	1 151	204 628

CINEMA CITY PLOIEȘTI AFI

Sali cinematograf/ Screens	Numar locuri/ Number of seats	Numar spectatori/ Admissions
1	109	10 684
2	147	12 152
3	216	15 370
4	190	13 267
5	297	20 820
6	311	15 449
Total	1 270	87 742

CINEMA CITY DEVA

Sali cinematograf/ Screens	Numar locuri/ Number of seats	Numar spectatori/ Admissions
1	313	57 406
2	220	37 951
3	165	30 753
4	165	24 207
5	139	25 062
6	85	21 034
Total	1 087	196 413

CINEMA CITY DROBETA TURNU SEVERIN

Sali cinematograf/ Screens	Numar locuri/ Number of seats	Numar spectatori/ Admissions
1	129	13 935
2	181	18 758
3	93	9 451
4	93	12 587
5	180	15 123
6	263	29 363
Total	939	99 217

CINEMA PALACE ORADEA

Sali cinematograf/ Screens	Numar locuri/ Number of seats	Numar spectatori/ Admissions
1	132	46 589
2	188	59 067
3	168	51 918
4	69	29 132
5	69	28 873
6	59	31 018
Total	685	246 597

CINEMA CITY TÂRGU JIU

Sali cinematograf/ Screens	Numar locuri/ Number of seats	Numar spectatori/ Admissions
1	317	31 532
2	122	15 659
3	100	13 231
4	93	10 640
5	176	16 635
6	229	22 785
Total	1037	110 482

CINEMA CITY PIATRA NEAMȚ

Sali cinematograf/ Screens	Numar locuri/ Number of seats	Numar spectatori/ Admissions
1	94	2 393
2	200	3 305
3	330	5 704
4	114	3 085
5	108	3 867
6	146	5 026
Total	992	23 3810

CINEMA INSPIRE CRAIOVA

Sali cinematograf/ Screens	Numar locuri/ Number of seats	Numar spectatori/ Admissions
1	100	19 890
2	94	14 365
3	88	13 398
4	92	17 478
5	95	18 421
6	96	18 136
Total	565	101 688

CINEMA CITY IAȘI

Sali cinematograf/ Screens	Numar locuri/ Number of seats	Numar spectatori/ Admissions
1	245	131 753
2	245	121 092
3	187	93 749
4	94	65 649
5	94	61 877
Total	865	474 120

CINE GRAND UVERTURA MALL BOTOȘANI

Sali cinematograf/ Screens	Numar locuri/ Number of seats	Numar spectatori/ Admissions
1	93	23 646
2	93	20 591
3	82	14 067
4	103	27 512
5	75	13 101
Total	446	98 917

CITYPLEX TOMIS CONSTANȚA

Sali cinematograf/ Screens	Numar locuri/ Number of seats	Numar spectatori/ Admissions
1	135	10 111
2	203	20 810
3	207	14 570
4	134	6 593
TOTAL	679	52 084

CITYPLEX BRAȘOV

Sali cinematograf/ Screens	Numar locuri/ Number of seats	Numar spectatori/ Admissions
1	81	1 887
2	81	1 463
3	81	1 434
Total	243	4 784

COLOURS CINEMA ALBA IULIA

Sali cinematograf/ Screens	Numar locuri/ Number of seats	Numar spectatori/ Admissions
1	111	44 382
2	111	37 204
3	87	23 362
Total	309	104 948

CINEMA HAPPY BUZĂU

Sali cinematograf/ Screens	Numar locuri/ Number of seats	Numar spectatori/ Admissions
1	180	34 573
2	108	25 071
3	103	19 254
Total	391	78 898

CITYPLEX TULCEA

Sali cinematograf/ Screens	Numar locuri/ Number of seats	Numar spectatori/ Admissions
1	131	9 930
2	81	11 476
Total	212	21 406

CITYPLEX BĂRLAD

Sali cinematograf/ Screens	Numar locuri/ Number of seats	Numar spectatori/ Admissions
1	165	29 851
2	72	1 344
Total	237	31 195

CITYPLEX VASLUI

Sali cinematograf/ Screens	Numar locuri/ Number of seats	Numar spectatori/ Admissions
1	75	6 130
2	75	5 758
Total	150	11 888

3D COLOURS CRAIOVA

Sali cinematograf/ Screens	Numar locuri/ Number of seats	Numar spectatori/ Admissions
1	118	72 267
2	69	14 365
Total	187	86 632

CINEMA HAPPY FOCŞANI

Sali cinematograf/ Screens	Numar locuri/ Number of seats	Numar spectatori/ Admissions
1	111	56 494
2	111	26 305
Total	222	82 799

EUGEN IONESCU SLATINA

Sali cinematograf/ Screens	Numar locuri/ Number of seats	Numar spectatori/ Admissions
1	43	15 673
2	43	21 674
Total	86	37 347

8. PRINCIPALELE CINEMATOGRAFE DE ARTĂ 2016
THE MAIN ART CINEMAS

Cinematograf/cinema localitate/town nr.locuri/number of seats	Spectacole/ Screenings 2016	Spectatori/ Admissions 2016
VICTORIA - Cluj_Napoca (283 locuri/seats)	1 572	62 202
ELVIRA POPESCU_București (239 locuri/seats)	872	55 877
NOUL CINEMATOGRAF AL REGIZORULUI ROMAN București (337 locuri/seats)	487	16 167
CITYPLEX CONSTANȚA -sala 4 (134 locuri/seats)	1 835	6 593
EUROPA_București (273 locuri/seats)	586	3 371
CITYPLEX BRAȘOV - sala 3 (81 locuri/seats)	120	1 434
CITYPLEX VICTORIA Bârlad- sala2 (72 locuri/seats)	893	1 344
MODERN - Craiova (175 locuri/seats)	339	1 264

9. PRIMELE 20 DE FILME DUPĂ NUMARUL SPECTATORILOR
THE TOP 20 RELEASED FEATURE FILMS BY ADMISSIONS
Anul / Year 2016

1)	BRIGADA SINUCIGASILOR SUICIDE SQUAD/FREEMAN ENTERTAINMENT	US, CA	424,782
2)	DEADPOOL DEADPOOL/ODEON CINEPLEX	US	354,819
3)	CARTEA JUNGLEI THE JUNGLE BOOK 3D/FORUM FILM ROMANIA	US	353,088
4)	BUNICUL DEZLANTUIT DIRTY GRANDPA/FREEMAN ENTERTAINMENT	US	305,691
5)	BATMAN VS. SUPERMAN: ZORII DREPTATII BATMAN VS SUPERMAN/FREEMAN ENTERTAINMENT	US	304,108
6)	DOCTOR STRANGE DOCTOR STRANGE 3D/FORUM FILM ROMANIA	US	287,555
7)	ZOOTROPOLIS ZOOTROPOLIS 3D/FORUM FILM ROMANIA	US	264,538
8)	TROLII TROLLS/ODEON CINEPLEX	US	253,507
9)	SINGURI ACASA THE SECRET LIFE OF PETS/RO-IMAGE 2000	US, JP	253,196
10)	NOW YOU SEE ME: JAFUL PERFECT 2 NOW YOU SEE ME 2/FREEMAN ENTERTAINMENT	US	244,353
11)	EPOCA DE GHEATA: PLOAIE DE METEORITI ICE AGE:COLLISION COURSE/ODEON CINEPLEX	US	238,046
12)	WARCRAFT: INCEPUTUL WARCRAFT. BEGINNING/RO-IMAGE 2000	US	217,045
13)	ZEII EGIPTULUI GODS OF EGYPT/RO-IMAGE 2000	US	212,863
14)	ANIMALE FANTASTICE SI UNDE LE POTI GASI FANTASTIC BEASTS AND WHERE TO FIND THEM/ FREEMAN ENTERTAINMENT	GB, US	209,936
15)	CAPITANUL AMERICA: RAZBOI CIVIL CAPTAIN AMERICA CIVIL WAR (3) FORUM FILM ROMANIA	US	205,500
16)	ROGUE ONE: O POVESTE STAR WARS STAR WARS ROGUE ONE 3D/FORUM FILM ROMANIA	US	205,272
17)	INFERNO INFERNO/INTERCOMFILM DISTRIBUTION	US	188,551
18)	UN POLITIST SI TREI SFERTURI RIDE ALONG 2/RO-IMAGE 2000	US	185,354
19)	MECANICUL 2 MECHANIC 2/FREEMAN ENTERTAINMENT	FR, US	175,352
20)	LA LIMITA EXTREMA POINT BREAK/RO-IMAGE 2000	US	164,143

10. PRIMELE 20 FILME EUROPENE DUPĂ NUMARUL SPECTATORILOR
THE TOP 20 EUROPEAN FEATURE FILMS BY ADMISSIONS
Anul / Year 2016

1)	ANIMALE FANTASTICE SI UNDE LE POTI GASI	GB,US	209,936
	FANTASTIC BEASTS AND WHERE TO FIND THEM/ FREEMAN ENTERTAINMENT		
2)	MECANICUL 2	FR,US	175,352
	MECHANIC 2/FREEMAN ENTERTAINMENT		
3)	COPIII DOMNISOAREI PEREGRINE	GB,BE,US	128,924
	MISS PEREGRINE'S HOME FOR PECULIAR CHILDREN/ ODEON CINEPLEX		
4)	CRAIASA ZAPEZII 2	RU	67,457
	SNOW QUEEN 2/FREEMAN ENTERTAINMENT		
5)	NOUA VIETI	FR,CN	51,476
	NINE LIVES/RO-IMAGE 2000		
6)	ROBINSON CRUSOE	BE,FR	44,720
	ROBINSON CRUSOE/RO-IMAGE 2000		
7)	FURA STEAGUL, SALVEAZA LUNA	ES	32,362
	CAPTURE THE FLAG/RO-IMAGE 2000		
8)	COLIZIUNEA	GB,DE	31,336
	COLLIDE/INTERCOMFILM DISTRIBUTION		
9)	VACANTA CU "DE TOATE"	FR	26,405
	ALL GONE SOUTH/RO-IMAGE 2000		
10)	SNOWDEN	FR,DE,US	20,720
	SNOWDEN/INDEPENDENTA FILM		
11)	FIUL LUI SAUL	HU	20,505
	SAUL FIA/TRANSILVANIA FILM		
12)	UN LUP PRINTRE OI	RU,US,GB	20,422
	SHEEP AND WOLVES/FREEMAN ENTERTAINMENT		
13)	UPS! AM PIERDUT ARCA	DE,BE,LX,IE	17,860
	TWO BY TWO/CINE EUROPA		
14)	DE CEALALTA PARTE	GB,US,IN	17,008
	THE OTHER SIDE OF THE DOOR/ODEON CINEPLEX		
15)	EDDIE VULTURUL	GB,DE,US	16,170
	EDDIE THE EAGLE/ODEON CINEPLEX		
16)	INTRUSUL	FR,US,CA	14,002
	SHUT IN/RO-IMAGE 2000		
17)	AL SAPTELEA PITIC	DE	10,828
	DER 7BTE ZWERG/CINE EUROPA		
18)	SAVVA: INIMA DE RAZBOINIC	RU	10,754
	SAVVA. HEART OF THE WARRIOR FREEMAN ENTERTAINMENT		
19)	AVENTURI IN PATTAYA	FR	9,092
	PATTAYA/ODEON CINEPLEX		
20)	TINERETE	IT,FR,CH,GB	8,054
	LA GIOVINEZZA aka YOUTH/INDEPENDENTA FILM		

**11. TOP FILME DE PREMIERA ROMANESTI DUPA NUMARUL DE SPECTATORI
Anul / Year 2016**

THE TOP 10 OF FIRST-RELEASE NATIONAL FEATURE FILMS BY ADMISSIONS

1)	#SELFIE 69	/ CRISTINA IACOB	133,207
	ZAZU FILM		
2)	DOUA LOZURI	/ PAUL NEGOESCU	127,513
	RO-IMAGE 2000		
3)	BACALAUREAT	/ CRISTIAN MUNGIU	54,444
	VOODOO FILMS		
4)	SIERANEVADA	/ CRISTI PUIU	30,217
	MANDRAGORA		
5)	CAINI	/ BOGDAN MIRICA	21,186
	TRANSILVANIA FILM		
6)	ILEGITIM	/ ADRIAN SITARU	10,852
	DOMESTIC FILM		
7)	MINTE-MA FRUMOS IN CENTRUL VECHI	/ IURA LUNCASU	9,528
	MOVIE PRODUCTION ENTERTAINMENT		
8)	INIMI CICATRIZATE	/ RADU JUDE	7,280
	MICRO FILM		
9)	ORIZONT	/ MARIAN CRISAN	5,537
	ROVA FILM		
10)	AFACEREA EST	/ IGOR COBILEANSKI	5,259
	MOVIE PRODUCTION ENTERTAINMENT		
11)	DINCOLO DE CALEA FERATA	/ CATALIN MITULESCU	4,747
	METROPOLIS FILM		
12)	MERCY STREET - STRADA SPERANTEI	/ STEFAN BUZEA, ALEXANDRU BUZEA, RADU NICOLAE	4,459
	OPAL PRODUCTION		
13)	CINEMA, MON AMOUR	/ ALEXANDRU BELC	3,287
	TRANSILVANIA FILM		
14)	DUBLU	/ CATRINEL DANAIATA	2,736
	MICRO FILM		
15)	TUDO	/ IURA LUNCASU	2,437
	MOVIE PRODUCTION ENTERTAINMENT		
16)	BILLION STAR HOTEL	/ ALEXANDRU ANDREI NASTOIU	1,830
	GAT FILMS TRANSILVANIA		
17)	MIRACOLUL DIN TEKIR	/ RUXANDRA ZENIDE	1,240
	ULTRAVIOLET MEDIA		
18)	BANAT (CALATORIA)	/ ADRIANO VALERIO	750
	MICRO FILM		
19)	03.BYPASS	/ NAP TOADER	671
	CLANDESTINO PRODUCTION		
20)	VIKTORIA	/ MAYA VITKOVA	657
	CLOROFILM		
21)	ALBUM DE FAMILIE	/ MEHMET CAN MERTOGLU	582
	PARADA FILM		
22)	FRATII DABIJA	/ CATALIN DRAGHICI	410
	ULTRAVIOLET MEDIA		
23)	IN CAUTAREA TATALUI PIERDUT	/ IONUT TEIANU	344

TRANSILVANIA FILM			
24)	BONDOC	/ CRISTIAN-SORIN DELCEA,	285
	DEFILM	MIHAI-GABRIEL VOINEA, DAN MIHAI MINCAN	
25)	NIASCHARIAN: TAINA	/ LEONARDO TONIZA	220
	PARADOX FILM		
26)	FEMEIA CU CRAVATA NEAGRA	/ ADRIAN POPOVICI	216
	PARADOX FILM		
27)	INTOARCEREA MAGILOR	/ IOAN CARMAZAN	74
	CINEMAGIX		
28)	DISCORDIA	/ IOAN INDOLEAN	69
	DIFFERENT DISTRIBUTORS		

12. PRIMELE 20 FILME ROMÂNESTI DUPA NUMARUL SPECTATORILOR 2012-2016
THE TOP 20 OF FIRST-RELEASE NATIONAL FEATURE FILMS BY ADMISSIONS 2012-2016

1. #SELFIE 69	133,207
CRISTINA IACOB /ZAZU FILM/2016	
2. DOUA LOZURI	127,513
PAUL NEGOESCU /RO-IMAGE 2000/2016	
3. POZITIA COPILULUI	112,134
CALIN PETER NETZER /PARADA FILM/2013	
4. #SELFIE	87,653
CRISTINA IACOB /ZAZU FILM/2014	
5. AFERIM!	75,343
RADU JUDE /PARADA FILM/2015	
6. DESPRE OAMENI SI MELCI	61,691
TUDOR GIURGIU /TRANSILVANIA FILM/2012	
7. MINTE-MA FRUMOS	56,878
IURA LUNCASU /MEDIAPRO DISTRIBUTION/2012	
8. BACALAUREAT	54,444
CRISTIAN MUNGIU /VOODOO FILMS/2016	
9. DUPA DEALURI	52,159
CRISTIAN MUNGIU /VOODOO FILMS/2012	
10. DE CE EU?	51,835
TUDOR GIURGIU /TRANSILVANIA FILM/2015	
11. HO HO HO 2: O LOTERIE DE FAMILIE	50,430
JESUS DEL CERRO /MEDIAPRO DISTRIBUTION/2012	
12. SIERANEVADA	30,217
CRISTI PUIU /MANDRAGORA/2016	
13. POVESTE DE DRAGOSTE	28,336
CRISTINA IACOB /ZAZU FILM/2015	
14. FUNERALII FERICITE	28,181
HORATIU MALAIELE /MEDIAPRO DISTRIBUTION/2013	
15. LOVE BUILDING	26,769
IULIA RUGINA /MEDIAPRO DISTRIBUTION/2013	
16. DOMNISOARA CHRISTINA	23,796
ALEXANDRU MAFTEI /ABIS STUDIO/2013	
17. CUSCRII	23,507
RADU POTCOAVA /INTERCOMFILM DISTRIBUTION/2014	
18. AMERICA, VENIM!	22,408
RAZVAN SAVESCU /TRANSILVANIA FILM/2014	
19. CAINI	21,186
BOGDAN MIRICA /TRANSILVANIA FILM/2016	
20. LUMEA E A MEA	18,840
NICOLAE CONSTANTIN TANASE /TRANSILVANIA FILM/2015	